

MANHATTAN

LONDON E14

PLAZA



AN ICONIC INFLUENCE

MANHATTAN - NEW YORK

LONDON CHIC MEETS

NEW YORK STYLE

**COSMOPOLITAN LIFESTYLE, GLOBAL CITY COMMERCE,
SUPERB CONNECTIVITY – THERE HAS NEVER BEEN A BETTER
TIME TO EXPERIENCE THE E14 LOCALE. THIS EXCLUSIVE
COLLECTION OF ONE, TWO & THREE BEDROOM APARTMENTS,
PENTHOUSES AND TOWNHOUSES ARE STYLED DOWN TO
THE LAST EXQUISITE DESIGN DETAIL.**



**CANARY WHARF LIFESTYLE
APARTMENTS • PENTHOUSES • TOWNHOUSES
CONCIERGE SERVICE • ROOF-TOP TERRACES
PRIVATE RESIDENTS' GYMNASIUM**

IN LONDON'S NEW METROPOLITAN CITY

FUTURE CANARY WHARF
CROSSRAIL STATION
(DUE TO OPEN 2018)



BLACKWALL DLR






Computer generated image of the future vision for the landscaped piazza, subject to completion of future residential in Phase 2, at Manhattan Plaza.



MAKE AN ENTRANCE

AT MANHATTAN PLAZA A SPACIOUS RECEPTION INSPIRED BY THE MOST
STYLISH HOTELS TOGETHER WITH CONCIERGE SERVICES FOR SECURITY AND
CONVENIENCE ALL SAY THAT - UNDOUBTEDLY - YOU HAVE ARRIVED.



At Manhattan Plaza, like any city resident worth their hi-tech designer running shoes, you can take your fitness seriously, and all without going the extra mile. With a private residents' gymnasium, whether you want to prioritise your cross-training or maximise your time on the treadmill it couldn't be easier to find a time to fit it into your schedule. Superbly equipped and air-conditioned, the purpose-built gymnasium is just one of the elements that make Manhattan Plaza an exceptional place to live.

**IN TODAY'S BUSY LIFE, FITNESS
IS THE PERFECT REMEDY.**

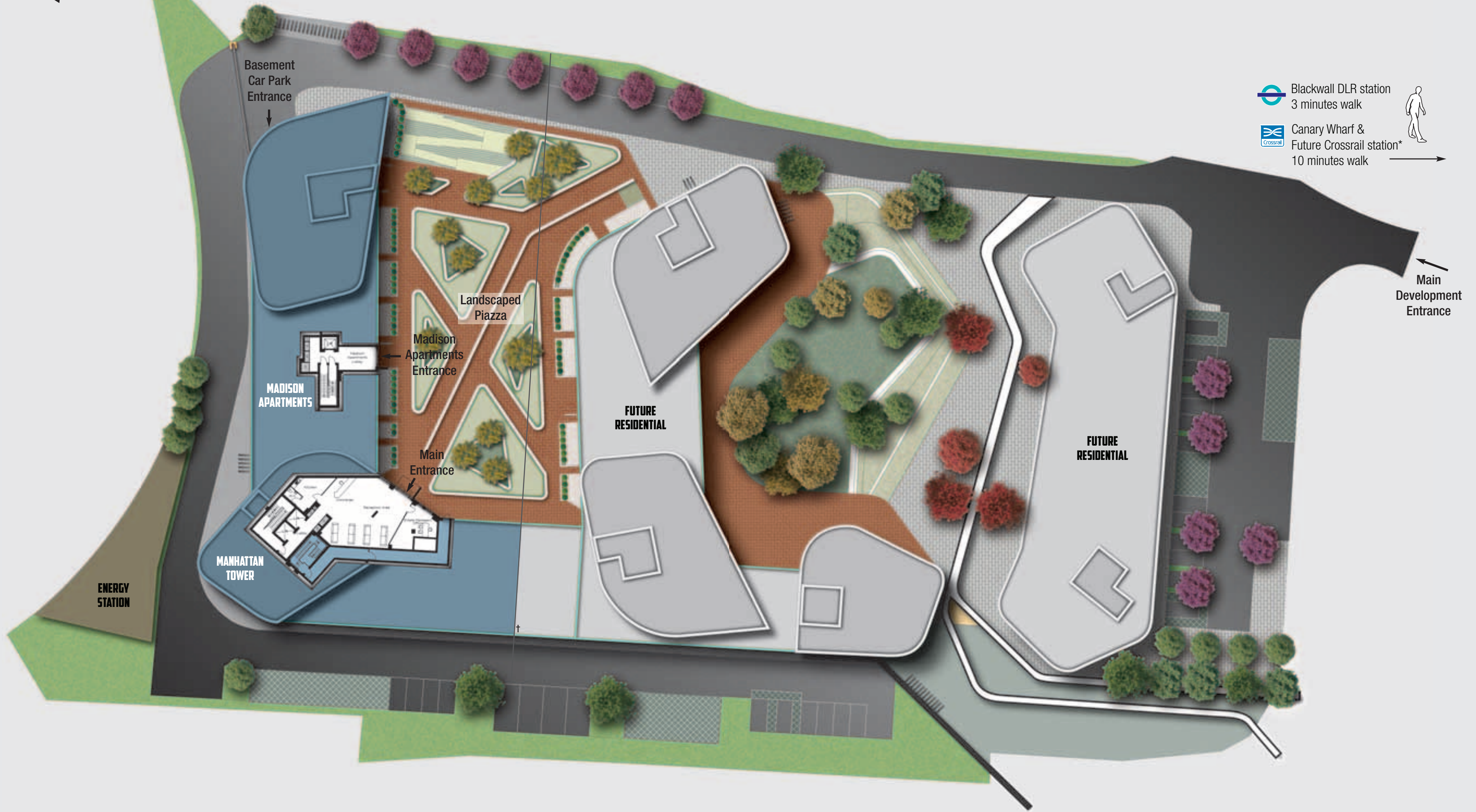
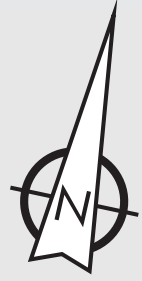
**AT MANHATTAN PLAZA FITNESS
COMES AS STANDARD.**





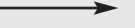
INTRODUCING THE TOWNHOUSES, APARTMENTS & PENTHOUSES



OVERALL DEVELOPMENT LAYOUT



-  Blackwall DLR station
3 minutes walk
-  Canary Wharf & Future Crossrail station*
10 minutes walk



Development layout not to scale, for indication only. Proposed landscaping subject to final design clearance and delivery of future residential.
† Indicates the temporary boundary for the Phase 1 piazza. *Due to open in 2018.

BASEMENT LEVEL



Entrance to Basement Car Park



Basement layout not to scale, for indication only. S = Services. Please note: basement car park will be further developed during construction of future residential. Car park for Manhattan Plaza shown.



Computer generated image of Manhattan Plaza with Canary Wharf and The City in the background.



LEVEL 00

TOWNHOUSES – LOWER FLOOR

TOWNHOUSES

Townhouse	Kitchen/Living/Dining	Bedroom 1	Bedroom 2	Bedroom 3	Total Area
TH 002	10.19m x 6.34m	4.93m x 3.82m	4.84m x 4.08m	3.45m x 3.10m	116.0 sq m / 1,249 sq ft
TH 006	9.28m x 6.41m	7.41m x 4.00m	4.13m x 3.14m	4.13m x 2.75m	131.3 sq m / 1,414 sq ft
TH 008	8.39m x 4.93m	5.90m x 2.82m	3.86m x 2.93m	-	90.8 sq m / 977 sq ft
TH 010	7.79m x 4.77m	7.79m x 3.48m	5.34m x 2.86m	-	93.5 sq m / 1,006 sq ft
TH 014	8.22m x 8.10m	5.34m x 3.47m	3.79m x 2.76m	3.79m x 2.70m	113.1 sq m / 1,217 sq ft
TH 016	8.10m x 5.74m	4.73m x 2.76m	5.98m x 2.87m	-	89.1 sq m / 959 sq ft

TOWNHOUSES

- 2 bedroom townhouse
- 3 bedroom townhouse

The dimensions given are accurate to within plus or minus two inches (50mm) from floor level and include wardrobe spaces where applicable. ◀▶ Indicates where measurements have been taken from. They are not intended to be used for carpet sizes, appliance space or items of furniture. Views shown are indicative and are for orientation purposes. The information is for general guidance only. S = Services FE = Fire Escape



LEVEL 01

MADISON APARTMENTS & TOWNHOUSES – UPPER FLOOR

MADISON APARTMENTS

Apartment	Kitchen/Living/Dining	Bedroom	Total Area
MA 101	6.42m x 4.35m	4.23m x 3.61m	54.9 sq m / 591 sq ft
MA 102	6.14m x 5.50m	4.07m x 3.68m	60.8 sq m / 655 sq ft
MA 103	5.20m x 5.11m	3.56m x 3.46m	51.4 sq m / 553 sq ft

TOWNHOUSES – UPPER FLOOR
Upper floor plan shown. Refer to dimensions on ground floor plan.

TOWNHOUSES

- 2 bedroom townhouse
- 3 bedroom townhouse

MADISON APARTMENTS

- 1 bedroom apartment

The dimensions given are accurate to within plus or minus two inches (50mm) from floor level and include wardrobe spaces where applicable. ◀▶ Indicates where measurements have been taken from. They are not intended to be used for carpet sizes, appliance space or items of furniture. Views shown are indicative and are for orientation purposes. The information is for general guidance only. S = Services FE = Fire Escape



LEVEL 02

MADISON APARTMENTS & MANHATTAN TOWER



MADISON APARTMENTS

- 1 bedroom apartment
- 2 bedroom apartment
- 3 bedroom apartment

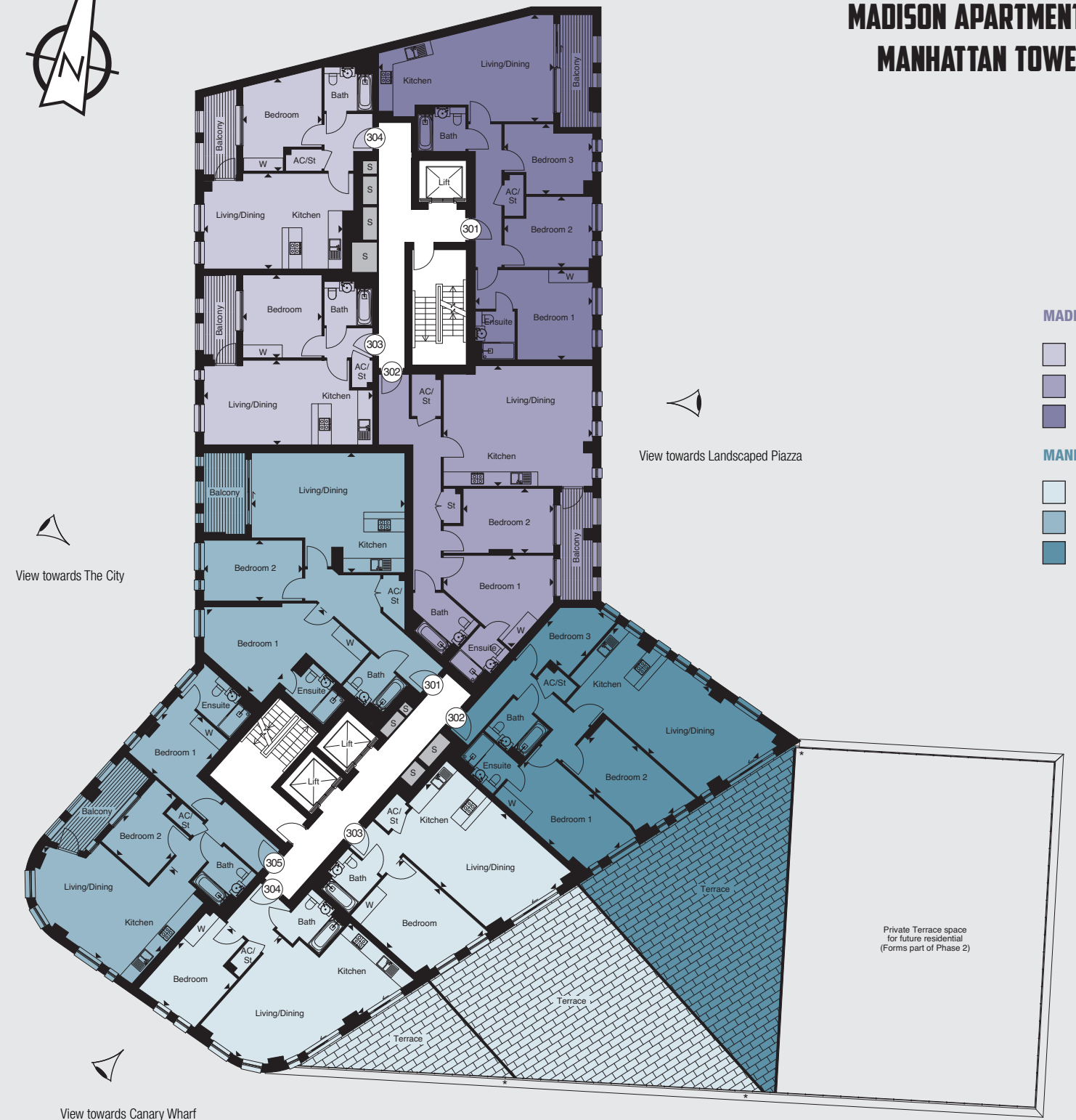
MANHATTAN TOWER

- 2 bedroom apartment



LEVEL 03

MADISON APARTMENTS & MANHATTAN TOWER



MADISON APARTMENTS

- 1 bedroom apartment
- 2 bedroom apartment
- 3 bedroom apartment

MANHATTAN TOWER

- 1 bedroom apartment
- 2 bedroom apartment
- 3 bedroom apartment

MADISON APARTMENTS

MA 201				
Kitchen/Living/Dining	7.98m x 4.87m	26'2" x 15'12"		
Bedroom 1	5.44m x 4.11m	17'10" x 13'6"		
Bedroom 2	4.13m x 3.22m	13'7" x 10'7"		
Bedroom 3	4.13m x 3.20m	13'7" x 10'6"		
Total Area	93.9 sq m	1,010 sq ft		

MA 202				
Kitchen/Living/Dining	6.79m x 5.49m	22'3" x 18'0"		
Bedroom 1	5.03m x 4.30m	16'6" x 14'1"		
Bedroom 2	4.13m x 2.95m	13'7" x 9'8"		
Total Area	96.9 sq m	1,042 sq ft		

MA 203				
Kitchen/Living/Dining	7.69m x 3.85m	25'3" x 12'8"		
Bedroom	3.79m x 3.61m	12'5" x 11'10"		
Total Area	51.8 sq m	558 sq ft		

MA 204				
Kitchen/Living/Dining	6.42m x 4.35m	21'1" x 14'3"		
Bedroom	4.23m x 3.61m	13'11" x 11'10"		
Total Area	54.9 sq m	591 sq ft		

MANHATTAN TOWER

MT 201				
Kitchen/Living/Dining	6.98m x 5.45m	22'11" x 17'11"		
Bedroom 1	5.06m x 4.86m	16'7" x 15'11"		
Bedroom 2	4.50m x 2.76m	14'9" x 9'1"		
Total Area	91.7 sq m	987 sq ft		

MT 202				
Kitchen/Living/Dining	7.13m x 5.40m	23'5" x 17'9"		
Bedroom 1	3.42m x 3.03m	11'3" x 9'11"		
Bedroom 2	3.75m x 2.90m	12'4" x 9'6"		
Total Area	71.6 sq m	771 sq ft		

MADISON APARTMENTS

MA 301				
Kitchen/Living/Dining	7.98m x 4.87m	26'2" x 15'12"		
Bedroom 1	5.44m x 4.11m	17'10" x 13'6"		
Bedroom 2	4.13m x 3.22m	13'7" x 10'7"		
Bedroom 3	4.13m x 3.20m	13'7" x 10'6"		
Total Area	93.9 sq m	1,010 sq ft		

MA 302				
Kitchen/Living/Dining	6.79m x 5.49m	22'3" x 18'0"		
Bedroom 1	5.03m x 4.30m	16'6" x 14'1"		
Bedroom 2	4.13m x 2.95m	13'7" x 9'8"		
Total Area	96.9 sq m	1,042 sq ft		

MA 303				
Kitchen/Living/Dining	7.69m x 3.85m	25'3" x 12'8"		
Bedroom	3.79m x 3.61m	12'5" x 11'10"		
Total Area	51.8 sq m	558 sq ft		

MA 304				
Kitchen/Living/Dining	6.42m x 4.35m	21'1" x 14'3"		
Bedroom	4.23m x 3.61m	13'11" x 11'10"		
Total Area	54.9 sq m	591 sq ft		

MANHATTAN TOWER

MT 301				
Kitchen/Living/Dining	6.98m x 5.45m	22'11" x 17'11"		
Bedroom 1	5.06m x 4.86m	16'7" x 15'11"		
Bedroom 2	4.50m x 2.76m	14'9" x 9'1"		
Total Area	91.7 sq m	987 sq ft		

MT 302				
Kitchen/Living/Dining	8.99m x 4.08m	29'6" x 13'5"		
Bedroom 1	5.97m x 3.05m	19'7" x 10'0"		
Bedroom 2	5.33m x 2.85m	17'6" x 9'4"		
Bedroom 3	3.19m x 2.34m	10'6" x 7'8"		
Total Area	98.3 sq m	1,058 sq ft		
Terrace Area	76.4 sq m	822 sq ft		

MT 303				
Kitchen/Living/Dining	7.59m x 4.46m	24'11" x 14'8"		
Bedroom	5.11m x 3.60m	16'9" x 11'10"		
Total Area	58.8 sq m	633 sq ft		
Terrace Area	73.5 sq m	791 sq ft		

MT 304				
Kitchen/Living/Dining	7.98m x 5.19m	26'2" x 17'0"		
Bedroom	4.70m x 3.10m	15'5" x 10'2"		
Total Area	58.1 sq m	626 sq ft		
Terrace Area	20.5 sq m	221 sq ft		

MT 305				
Kitchen/Living/Dining	7.13m x 5.40m	23'5" x 17'9"		
Bedroom 1	3.42m x 3.03m	11'3" x 9'11"		
Bedroom 2	3.75m x 2.90m	12'4" x 9'6"		
Total Area	71.4 sq m	769 sq ft		

The dimensions given are accurate to within plus or minus two inches (50mm) from floor level and include wardrobe spaces where applicable. ◀▶ Indicates where measurements have been taken from. They are not intended to be used for carpet sizes, appliance space or terms of furniture. Views shown are indicative and are for orientation purposes. The information is for general guidance only. S | = Services *1.8m high partition

The dimensions given are accurate to within plus or minus two inches (50mm) from floor level and include wardrobe spaces where applicable. ◀▶ Indicates where measurements have been taken from. They are not intended to be used for carpet sizes, appliance space or terms of furniture. Views shown are indicative and are for orientation purposes. The information is for general guidance only. S | = Services *1.8m high partition



LEVEL 04

MADISON APARTMENTS & MANHATTAN TOWER



MADISON APARTMENTS

- 1 bedroom apartment
- 2 bedroom apartment
- 3 bedroom apartment

MANHATTAN TOWER

- 1 bedroom apartment
- 2 bedroom apartment
- 3 bedroom apartment



LEVEL 05

MADISON APARTMENTS & MANHATTAN TOWER



MADISON APARTMENTS

- 1 bedroom apartment
- 2 bedroom apartment
- 3 bedroom apartment

MANHATTAN TOWER

- 1 bedroom apartment
- 2 bedroom apartment
- 3 bedroom apartment

MADISON APARTMENTS

MA 401			
Kitchen/Living/Dining	7.98m x 4.87m	26'2" x 15'12"	
Bedroom 1	5.44m x 4.11m	17'10" x 13'6"	
Bedroom 2	4.13m x 3.22m	13'7" x 10'7"	
Bedroom 3	4.13m x 3.20m	13'7" x 10'6"	
Total Area	93.9 sq m	1,010 sq ft	

MA 402			
Kitchen/Living/Dining	6.79m x 5.49m	22'3" x 18'0"	
Bedroom 1	5.03m x 4.30m	16'6" x 14'1"	
Bedroom 2	4.13m x 2.95m	13'7" x 9'8"	
Total Area	96.9 sq m	1,042 sq ft	

MA 403			
Kitchen/Living/Dining	7.69m x 3.85m	25'3" x 12'8"	
Bedroom	3.79m x 3.61m	12'5" x 11'10"	
Total Area	51.8 sq m	558 sq ft	

MANHATTAN TOWER

MT 404			
Kitchen/Living/Dining	6.42m x 4.35m	21'1" x 14'3"	
Bedroom	4.23m x 3.61m	13'11" x 11'10"	
Total Area	54.9 sq m	591 sq ft	

MANHATTAN TOWER

MT 401			
Kitchen/Living/Dining	6.98m x 5.45m	22'11" x 17'11"	
Bedroom 1	5.06m x 4.86m	16'7" x 15'11"	
Bedroom 2	4.50m x 2.76m	14'9" x 9'1"	
Total Area	91.7 sq m	987 sq ft	

MT 402			
Kitchen/Living/Dining	8.99m x 3.93m	29'6" x 12'11"	
Bedroom 1	4.23m x 3.20m	13'11" x 10'6"	
Bedroom 2	3.51m x 2.85m	11'6" x 9'4"	
Bedroom 3	3.19m x 2.34m	10'6" x 7'8"	
Total Area	87.7 sq m	944 sq ft	

MANHATTAN TOWER

MT 403			
Kitchen/Living/Dining	7.59m x 4.20m	24'11" x 13'9"	
Bedroom	3.86m x 3.28m	12'8" x 10'9"	
Total Area	51.8 sq m	557 sq ft	

MANHATTAN TOWER

MT 404			
Kitchen/Living/Dining	6.32m x 5.19m	20'9" x 17'0"	
Bedroom	4.68m x 3.10m	15'4" x 10'2"	
Total Area	51.7 sq m	556 sq ft	

MANHATTAN TOWER

MT 405			
Kitchen/Living/Dining	7.13m x 5.40m	23'5" x 17'9"	
Bedroom 1	3.42m x 3.03m	11'3" x 9'11"	
Bedroom 2	3.75m x 2.90m	12'4" x 9'6"	
Total Area	71.6 sq m	771 sq ft	

MADISON APARTMENTS

MA 501			
Kitchen/Living/Dining	7.98m x 4.87m	26'2" x 15'12"	
Bedroom 1	5.44m x 4.11m	17'10" x 13'6"	
Bedroom 2	4.13m x 3.22m	13'7" x 10'7"	
Bedroom 3	4.13m x 3.20m	13'7" x 10'6"	
Total Area	93.9 sq m	1,010 sq ft	

MA 502			
Kitchen/Living/Dining	6.79m x 5.49m	22'3" x 18'0"	
Bedroom 1	5.03m x 4.30m	16'6" x 14'1"	
Bedroom 2	4.13m x 2.95m	13'7" x 9'8"	
Total Area	96.9 sq m	1,042 sq ft	

MA 503			
Kitchen/Living/Dining	7.69m x 3.85m	25'3" x 12'8"	
Bedroom	3.79m x 3.61m	12'5" x 11'10"	
Total Area	51.8 sq m	558 sq ft	

MANHATTAN TOWER

MT 504			
Kitchen/Living/Dining	6.42m x 4.35m	21'1" x 14'3"	
Bedroom	4.23m x 3.61m	13'11" x 11'10"	
Total Area	54.9 sq m	591 sq ft	

MANHATTAN TOWER

MT 501			
Kitchen/Living/Dining	6.98m x 5.45m	22'11" x 17'11"	
Bedroom 1	5.06m x 4.86m	16'7" x 15'11"	
Bedroom 2	4.50m x 2.76m	14'9" x 9'1"	
Total Area	91.7 sq m	987 sq ft	

MT 502			
Kitchen/Living/Dining	8.99m x 3.93m	29'6" x 12'11"	
Bedroom 1	4.23m x 3.20m	13'11" x 10'6"	
Bedroom 2	3.51m x 2.85m	11'6" x 9'4"	
Bedroom 3	3.19m x 2.34m	10'6" x 7'8"	
Total Area	87.7 sq m	944 sq ft	

MANHATTAN TOWER

MT 503			
Kitchen/Living/Dining	7.59m x 4.20m	24'11" x 13'9"	
Bedroom	3.86m x 3.28m	12'8" x 10'9"	
Total Area	51.8 sq m	557 sq ft	

MANHATTAN TOWER

MT 504			
Kitchen/Living/Dining	6.32m x 5.19m	20'9" x 17'0"	
Bedroom	4.68m x 3.10m	15'4" x 10'2"	
Total Area	51.7 sq m	556 sq ft	

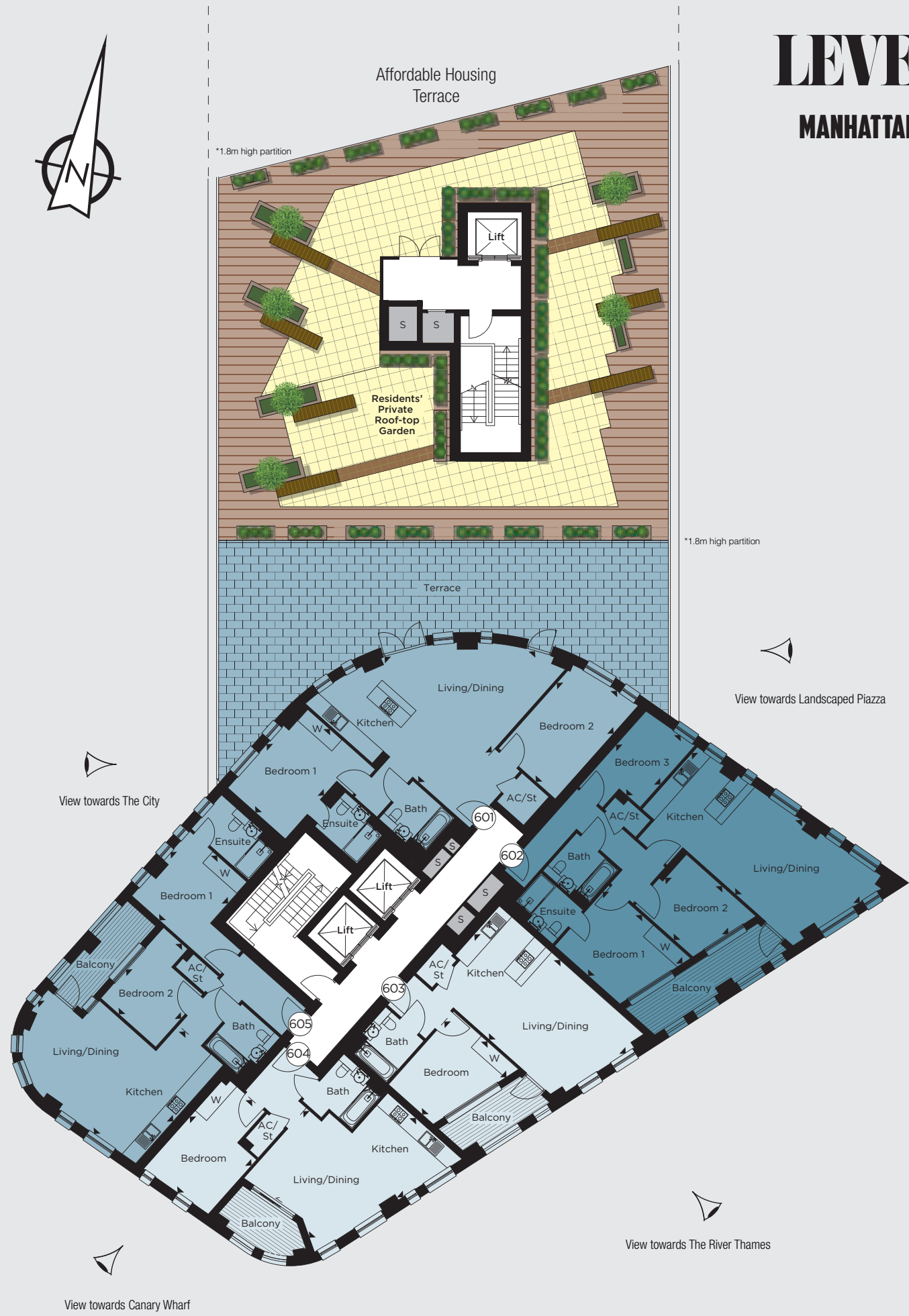
MANHATTAN TOWER

MT 505			
Kitchen/Living/Dining	7.13m x 5.40m	23'5" x 17'9"	
Bedroom 1	3.42m x 3.03m	11'3" x 9'11"	
Bedroom 2	3.75m x 2.90m	12'4" x 9'6"	
Total Area	71.4 sq m	769 sq ft	



LEVEL 06

MANHATTAN TOWER



MANHATTAN TOWER

- 1 bedroom apartment
- 2 bedroom apartment
- 3 bedroom apartment



LEVEL 07

MANHATTAN TOWER



MANHATTAN TOWER

- 1 bedroom apartment
- 2 bedroom apartment
- 3 bedroom apartment

MT 601			
Kitchen/Living/Dining	6.91m x 5.65m	22'8" x 18'6"	
Bedroom 1	4.41m x 3.03m	14'6" x 9'11"	
Bedroom 2	4.80m x 3.00m	15'9" x 9'10"	
Total Area	84.9 sq m	914 sq ft	
Terrace Area	89.8 sq m	967 sq ft	

MT 602			
Kitchen/Living/Dining	8.99m x 3.93m	29'6" x 12'11"	
Bedroom 1	4.00m x 3.20m	13'1" x 10'6"	
Bedroom 2	3.32m x 2.85m	10'11" x 9'4"	
Bedroom 3	3.19m x 2.34m	10'6" x 7'8"	
Total Area	87.9 sq m	947 sq ft	

MT 603			
Kitchen/Living/Dining	7.59m x 4.20m	24'11" x 13'9"	
Bedroom	3.86m x 3.28m	12'8" x 10'9"	
Total Area	51.8 sq m	557 sq ft	

MT 604			
Kitchen/Living/Dining	6.32m x 5.19m	20'9" x 17'0"	
Bedroom	4.68m x 3.10m	15'4" x 10'2"	
Total Area	51.7 sq m	556 sq ft	

MT 605			
Kitchen/Living/Dining	7.13m x 5.40m	23'5" x 17'9"	
Bedroom 1	3.42m x 3.03m	11'3" x 9'11"	
Bedroom 2	3.75m x 2.90m	12'4" x 9'6"	
Total Area	71.6 sq m	771 sq ft	

MT 701			
Kitchen/Living/Dining	6.89m x 5.63m	22'7" x 18'6"	
Bedroom 1	4.41m x 3.03m	14'6" x 9'11"	
Bedroom 2	3.63m x 3.00m	11'11" x 9'10"	
Total Area	78.7 sq m	847 sq ft	

MT 702			
Kitchen/Living/Dining	8.99m x 3.93m	29'6" x 12'11"	
Bedroom 1	4.00m x 3.20m	13'1" x 10'6"	
Bedroom 2	3.32m x 2.85m	10'11" x 9'4"	
Bedroom 3	3.19m x 2.34m	10'6" x 7'8"	
Total Area	87.9 sq m	947 sq ft	

MT 703			
Kitchen/Living/Dining	7.59m x 4.20m	24'11" x 13'9"	
Bedroom	3.86m x 3.28m	12'8" x 10'9"	
Total Area	51.8 sq m	557 sq ft	

MT 704			
Kitchen/Living/Dining	6.32m x 5.19m	20'9" x 17'0"	
Bedroom	4.68m x 3.10m	15'4" x 10'2"	
Total Area	51.7 sq m	556 sq ft	

MT 705			
Kitchen/Living/Dining	7.13m x 5.40m	23'5" x 17'9"	
Bedroom 1	3.42m x 3.03m	11'3" x 9'11"	
Bedroom 2	3.75m x 2.90m	12'4" x 9'6"	
Total Area	71.4 sq m	769 sq ft	

The dimensions given are accurate to within plus or minus two inches (50mm) from floor level and include wardrobe spaces where applicable. ◀▶ Indicates where measurements have been taken from. They are not intended to be used for carpet sizes, appliance space or terms of furniture. Views shown are indicative and are for orientation purposes. The information is for general guidance only. S = Services

The dimensions given are accurate to within plus or minus two inches (50mm) from floor level and include wardrobe spaces where applicable. ◀▶ Indicates where measurements have been taken from. They are not intended to be used for carpet sizes, appliance space or terms of furniture. Views shown are indicative and are for orientation purposes. The information is for general guidance only. S = Services



LEVEL 08

MANHATTAN TOWER

View towards North London

View towards Landscaped Piazza

View towards The City



View towards Canary Wharf

MANHATTAN TOWER

- 1 bedroom apartment
- 2 bedroom apartment
- 3 bedroom apartment

MT 801			
Kitchen/Living/Dining	5.67m x 5.65m	18'7" x 18'6"	
Bedroom 1	4.41m x 3.03m	14'6" x 9'11"	
Bedroom 2	3.63m x 3.00m	11'11" x 9'10"	
Total Area	77.2 sq m	831 sq ft	

MT 802			
Kitchen/Living/Dining	8.99m x 3.93m	29'6" x 12'11"	
Bedroom 1	4.00m x 3.20m	13'1" x 10'6"	
Bedroom 2	3.32m x 2.85m	10'11" x 9'4"	
Bedroom 3	3.19m x 2.34m	10'6" x 7'8"	
Total Area	87.9 sq m	947 sq ft	

MT 803			
Kitchen/Living/Dining	7.59m x 4.20m	24'11" x 13'9"	
Bedroom	3.86m x 3.28m	12'8" x 10'9"	
Total Area	51.8 sq m	557 sq ft	

MT 804			
Kitchen/Living/Dining	6.32m x 5.19m	20'9" x 17'0"	
Bedroom	4.68m x 3.10m	15'4" x 10'2"	
Total Area	51.7 sq m	556 sq ft	

MT 805			
Kitchen/Living/Dining	7.13m x 5.40m	23'5" x 17'9"	
Bedroom 1	3.42m x 3.03m	11'3" x 9'11"	
Bedroom 2	3.75m x 2.90m	12'4" x 9'6"	
Total Area	71.6 sq m	771 sq ft	

The dimensions given are accurate to within plus or minus two inches (50mm) from floor level and include wardrobe spaces where applicable. ◀▶ Indicates where measurements have been taken from. They are not intended to be used for carpet sizes, appliance space or terms of furniture. Views shown are indicative and are for orientation purposes. The information is for general guidance only. S = Services



LEVEL 09

MANHATTAN TOWER

View towards North London

View towards Landscaped Piazza

View towards The City



View towards Canary Wharf

MANHATTAN TOWER

- 1 bedroom apartment
- 2 bedroom apartment
- 3 bedroom apartment

MT 901			
Kitchen/Living/Dining	6.89m x 5.63m	22'7" x 18'6"	
Bedroom 1	4.41m x 3.03m	14'6" x 9'11"	
Bedroom 2	3.63m x 3.00m	11'11" x 9'10"	
Total Area	78.7 sq m	847 sq ft	

MT 902			
Kitchen/Living/Dining	8.99m x 3.93m	29'6" x 12'11"	
Bedroom 1	4.00m x 3.20m	13'1" x 10'6"	
Bedroom 2	3.32m x 2.85m	10'11" x 9'4"	
Bedroom 3	3.19m x 2.34m	10'6" x 7'8"	
Total Area	87.9 sq m	947 sq ft	

MT 903			
Kitchen/Living/Dining	7.59m x 4.20m	24'11" x 13'9"	
Bedroom	3.86m x 3.28m	12'8" x 10'9"	
Total Area	51.8 sq m	557 sq ft	

MT 904			
Kitchen/Living/Dining	6.32m x 5.19m	20'9" x 17'0"	
Bedroom	4.68m x 3.10m	15'4" x 10'2"	
Total Area	51.7 sq m	556 sq ft	

MT 905			
Kitchen/Living/Dining	7.13m x 5.40m	23'5" x 17'9"	
Bedroom 1	3.42m x 3.03m	11'3" x 9'11"	
Bedroom 2	3.75m x 2.90m	12'4" x 9'6"	
Total Area	71.4 sq m	769 sq ft	

The dimensions given are accurate to within plus or minus two inches (50mm) from floor level and include wardrobe spaces where applicable. ◀▶ Indicates where measurements have been taken from. They are not intended to be used for carpet sizes, appliance space or terms of furniture. Views shown are indicative and are for orientation purposes. The information is for general guidance only. S = Services



LEVEL 10

MANHATTAN TOWER

View towards North London

View towards Landscaped Piazza

View towards The City



View towards Canary Wharf

MANHATTAN TOWER

- 1 bedroom apartment
- 2 bedroom apartment
- 3 bedroom apartment

MT 1001

Kitchen/Living/Dining	5.67m x 5.65m	18'7" x 18'6"
Bedroom 1	4.41m x 3.03m	14'6" x 9'11"
Bedroom 2	3.63m x 3.00m	11'11" x 9'10"
Total Area	77.2 sq m	831 sq ft

MT 1002

Kitchen/Living/Dining	8.99m x 3.93m	29'6" x 12'11"
Bedroom 1	4.00m x 3.20m	13'1" x 10'6"
Bedroom 2	3.32m x 2.85m	10'11" x 9'4"
Bedroom 3	3.19m x 2.34m	10'6" x 7'8"
Total Area	87.9 sq m	947 sq ft

MT 1003

Kitchen/Living/Dining	7.59m x 4.20m	24'11" x 13'9"
Bedroom	3.86m x 3.28m	12'8" x 10'9"
Total Area	51.8 sq m	557 sq ft

MT 1004

Kitchen/Living/Dining	6.32m x 5.19m	20'9" x 17'0"
Bedroom	4.68m x 3.10m	15'4" x 10'2"
Total Area	51.7 sq m	556 sq ft

MT 1005

Kitchen/Living/Dining	7.13m x 5.40m	23'5" x 17'9"
Bedroom 1	3.42m x 3.03m	11'3" x 9'11"
Bedroom 2	3.75m x 2.90m	12'4" x 9'6"
Total Area	71.6 sq m	771 sq ft

The dimensions given are accurate to within plus or minus two inches (50mm) from floor level and include wardrobe spaces where applicable. ◀▶ Indicates where measurements have been taken from. They are not intended to be used for carpet sizes, appliance space or terms of furniture. Views shown are indicative and are for orientation purposes. The information is for general guidance only. S = Services



LEVEL 11

MANHATTAN TOWER

View towards North London

View towards Landscaped Piazza

View towards The City



View towards Canary Wharf

MANHATTAN TOWER

- 1 bedroom apartment
- 2 bedroom apartment
- 3 bedroom apartment

MT 1101

Kitchen/Living/Dining	6.89m x 5.63m	22'7" x 18'6"
Bedroom 1	4.41m x 3.03m	14'6" x 9'11"
Bedroom 2	3.63m x 3.00m	11'11" x 9'10"
Total Area	78.7 sq m	847 sq ft

MT 1102

Kitchen/Living/Dining	8.99m x 3.93m	29'6" x 12'11"
Bedroom 1	4.00m x 3.20m	13'1" x 10'6"
Bedroom 2	3.32m x 2.85m	10'11" x 9'4"
Bedroom 3	3.19m x 2.34m	10'6" x 7'8"
Total Area	87.9 sq m	947 sq ft

MT 1103

Kitchen/Living/Dining	7.59m x 4.20m	24'11" x 13'9"
Bedroom	3.86m x 3.28m	12'8" x 10'9"
Total Area	51.8 sq m	557 sq ft

MT 1104

Kitchen/Living/Dining	6.32m x 5.19m	20'9" x 17'0"
Bedroom	4.68m x 3.10m	15'4" x 10'2"
Total Area	51.7 sq m	556 sq ft

MT 1105

Kitchen/Living/Dining	7.13m x 5.40m	23'5" x 17'9"
Bedroom 1	3.42m x 3.03m	11'3" x 9'11"
Bedroom 2	3.75m x 2.90m	12'4" x 9'6"
Total Area	71.4 sq m	769 sq ft

The dimensions given are accurate to within plus or minus two inches (50mm) from floor level and include wardrobe spaces where applicable. ◀▶ Indicates where measurements have been taken from. They are not intended to be used for carpet sizes, appliance space or terms of furniture. Views shown are indicative and are for orientation purposes. The information is for general guidance only. S = Services



LEVEL 12

MANHATTAN TOWER

View towards North London

View towards Landscaped Piazza

View towards The City



View towards Canary Wharf

MANHATTAN TOWER

- 1 bedroom apartment
- 2 bedroom apartment
- 3 bedroom apartment

MT 1201			
Kitchen/Living/Dining	5.67m x 5.65m	18'7" x 18'6"	
Bedroom 1	4.41m x 3.03m	14'6" x 9'11"	
Bedroom 2	3.63m x 3.00m	11'11" x 9'10"	
Total Area	77.2 sq m	831 sq ft	

MT 1202			
Kitchen/Living/Dining	8.99m x 3.93m	29'6" x 12'11"	
Bedroom 1	4.00m x 3.20m	13'1" x 10'6"	
Bedroom 2	3.32m x 2.85m	10'11" x 9'4"	
Bedroom 3	3.19m x 2.34m	10'6" x 7'8"	
Total Area	87.9 sq m	947 sq ft	

MT 1203			
Kitchen/Living/Dining	7.59m x 4.20m	24'11" x 13'9"	
Bedroom	3.86m x 3.28m	12'8" x 10'9"	
Total Area	51.8 sq m	557 sq ft	

MT 1204			
Kitchen/Living/Dining	6.32m x 5.19m	20'9" x 17'0"	
Bedroom	4.68m x 3.10m	15'4" x 10'2"	
Total Area	51.7 sq m	556 sq ft	

MT 1205			
Kitchen/Living/Dining	7.13m x 5.40m	23'5" x 17'9"	
Bedroom 1	3.42m x 3.03m	11'3" x 9'11"	
Bedroom 2	3.75m x 2.90m	12'4" x 9'6"	
Total Area	71.6 sq m	771 sq ft	

The dimensions given are accurate to within plus or minus two inches (50mm) from floor level and include wardrobe spaces where applicable. ◀▶ Indicates where measurements have been taken from. They are not intended to be used for carpet sizes, appliance space or terms of furniture. Views shown are indicative and are for orientation purposes. The information is for general guidance only. S = Services



LEVEL 13

MANHATTAN TOWER

View towards North London

View towards Landscaped Piazza

View towards The City



View towards Canary Wharf

MANHATTAN TOWER

- 1 bedroom apartment
- 2 bedroom apartment
- 3 bedroom apartment

MT 1301			
Kitchen/Living/Dining	6.89m x 5.63m	22'7" x 18'6"	
Bedroom 1	4.41m x 3.13m	14'6" x 10'3"	
Bedroom 2	3.63m x 3.00m	11'11" x 9'10"	
Total Area	79.0 sq m	851 sq ft	

MT 1302			
Kitchen/Living/Dining	8.99m x 3.93m	29'6" x 12'11"	
Bedroom 1	4.11m x 3.20m	13'6" x 10'6"	
Bedroom 2	3.32m x 2.85m	10'11" x 9'4"	
Bedroom 3	3.19m x 2.35m	10'6" x 7'9"	
Total Area	88.3 sq m	951 sq ft	

MT 1303			
Kitchen/Living/Dining	7.69m x 4.20m	25'3" x 13'9"	
Bedroom	3.86m x 3.38m	12'8" x 11'1"	
Total Area	52.3 sq m	563 sq ft	

MT 1304			
Kitchen/Living/Dining	6.32m x 5.19m	20'9" x 17'0"	
Bedroom	4.68m x 3.20m	15'4" x 10'6"	
Total Area	52.2 sq m	562 sq ft	

MT 1305			
Kitchen/Living/Dining	7.11m x 5.39m	23'4" x 17'8"	
Bedroom 1	3.42m x 3.13m	11'3" x 10'3"	
Bedroom 2	3.75m x 2.90m	12'4" x 9'6"	
Total Area	71.9 sq m	773 sq ft	

The dimensions given are accurate to within plus or minus two inches (50mm) from floor level and include wardrobe spaces where applicable. ◀▶ Indicates where measurements have been taken from. They are not intended to be used for carpet sizes, appliance space or terms of furniture. Views shown are indicative and are for orientation purposes. The information is for general guidance only. S = Services



LEVEL 14

MANHATTAN TOWER

View towards North London

View towards Landscaped Piazza

View towards The City



View towards Canary Wharf

MANHATTAN TOWER

- 1 bedroom apartment
- 2 bedroom apartment
- 3 bedroom apartment

MT 1401

Kitchen/Living/Dining	6.52m x 5.63m	21'5" x 18'6"
Bedroom 1	4.41m x 3.13m	14'6" x 10'3"
Bedroom 2	3.63m x 3.00m	11'11" x 9'10"
Total Area	78.2 sq m	842 sq ft

MT 1402

Kitchen/Living/Dining	8.99m x 3.93m	29'6" x 12'11"
Bedroom 1	4.11m x 3.20m	13'6" x 10'6"
Bedroom 2	3.32m x 2.85m	10'11" x 9'4"
Bedroom 3	3.19m x 2.35m	10'6" x 7'9"
Total Area	88.3 sq m	951 sq ft

MT 1403

Kitchen/Living/Dining	7.69m x 4.20m	25'3" x 13'9"
Bedroom	3.86m x 3.38m	12'8" x 11'1"
Total Area	52.3 sq m	563 sq ft

MT 1404

Kitchen/Living/Dining	6.32m x 5.19m	20'9" x 17'0"
Bedroom	4.68m x 3.20m	15'4" x 10'6"
Total Area	52.2 sq m	562 sq ft

MT 1405

Kitchen/Living/Dining	7.13m x 5.40m	23'5" x 17'9"
Bedroom 1	3.42m x 3.13m	11'3" x 10'3"
Bedroom 2	3.75m x 2.90m	12'4" x 9'6"
Total Area	72.8 sq m	783 sq ft

The dimensions given are accurate to within plus or minus two inches (50mm) from floor level and include wardrobe spaces where applicable. ◀▶ Indicates where measurements have been taken from. They are not intended to be used for carpet sizes, appliance space or terms of furniture. Views shown are indicative and are for orientation purposes. The information is for general guidance only. S = Services



LEVEL 15

MANHATTAN TOWER

View towards North London

View towards Landscaped Piazza

View towards The City



View towards Canary Wharf

MANHATTAN TOWER

- 1 bedroom apartment
- 2 bedroom apartment
- 3 bedroom apartment

MT 1501

Kitchen/Living/Dining	6.89m x 5.63m	22'7" x 18'6"
Bedroom 1	4.41m x 3.13m	14'6" x 10'3"
Bedroom 2	3.63m x 3.00m	11'11" x 9'10"
Total Area	79.0 sq m	851 sq ft

MT 1502

Kitchen/Living/Dining	8.99m x 3.93m	29'6" x 12'11"
Bedroom 1	4.11m x 3.20m	13'6" x 10'6"
Bedroom 2	3.32m x 2.85m	10'11" x 9'4"
Bedroom 3	3.19m x 2.35m	10'6" x 7'9"
Total Area	88.3 sq m	951 sq ft

MT 1503

Kitchen/Living/Dining	7.69m x 4.20m	25'3" x 13'9"
Bedroom	3.86m x 3.38m	12'8" x 11'1"
Total Area	52.3 sq m	563 sq ft

MT 1504

Kitchen/Living/Dining	6.32m x 5.19m	20'9" x 17'0"
Bedroom	4.68m x 3.20m	15'4" x 10'6"
Total Area	52.2 sq m	562 sq ft

MT 1505

Kitchen/Living/Dining	7.11m x 5.39m	23'4" x 17'8"
Bedroom 1	3.42m x 3.13m	11'3" x 10'3"
Bedroom 2	3.75m x 2.90m	12'4" x 9'6"
Total Area	71.9 sq m	773 sq ft

The dimensions given are accurate to within plus or minus two inches (50mm) from floor level and include wardrobe spaces where applicable. ◀▶ Indicates where measurements have been taken from. They are not intended to be used for carpet sizes, appliance space or terms of furniture. Views shown are indicative and are for orientation purposes. The information is for general guidance only. S = Services



LEVEL 16

MANHATTAN TOWER

View towards North London

View towards Landscaped Piazza

View towards The City



View towards Canary Wharf

MANHATTAN TOWER

- 1 bedroom apartment
- 2 bedroom apartment
- 3 bedroom apartment

MT 1601

Kitchen/Living/Dining	6.52m x 5.63m	21'5" x 18'6"
Bedroom 1	4.41m x 3.13m	14'6" x 10'3"
Bedroom 2	3.63m x 3.00m	11'11" x 9'10"
Total Area	78.2 sq m	842 sq ft

MT 1602

Kitchen/Living/Dining	8.99m x 3.93m	29'6" x 12'11"
Bedroom 1	4.11m x 3.20m	13'6" x 10'6"
Bedroom 2	3.32m x 2.85m	10'11" x 9'4"
Bedroom 3	3.19m x 2.35m	10'6" x 7'9"
Total Area	88.3 sq m	951 sq ft

MT 1603

Kitchen/Living/Dining	7.69m x 4.20m	25'3" x 13'9"
Bedroom	3.86m x 3.38m	12'8" x 11'1"
Total Area	52.3 sq m	563 sq ft

MT 1604

Kitchen/Living/Dining	6.32m x 5.19m	20'9" x 17'0"
Bedroom	4.68m x 3.20m	15'4" x 10'6"
Total Area	52.2 sq m	562 sq ft

MT 1605

Kitchen/Living/Dining	7.13m x 5.40m	23'5" x 17'9"
Bedroom 1	3.42m x 3.13m	11'3" x 10'3"
Bedroom 2	3.75m x 2.90m	12'4" x 9'6"
Total Area	72.8 sq m	783 sq ft

The dimensions given are accurate to within plus or minus two inches (50mm) from floor level and include wardrobe spaces where applicable. ◀▶ Indicates where measurements have been taken from. They are not intended to be used for carpet sizes, appliance space or terms of furniture. Views shown are indicative and are for orientation purposes. The information is for general guidance only. S = Services



LEVEL 17

MANHATTAN TOWER

View towards North London

View towards Landscaped Piazza

View towards The City



View towards Canary Wharf

MANHATTAN TOWER

- 1 bedroom apartment
- 2 bedroom apartment
- 3 bedroom apartment

MT 1701

Kitchen/Living/Dining	6.89m x 5.63m	22'7" x 18'6"
Bedroom 1	4.41m x 3.13m	14'6" x 10'3"
Bedroom 2	3.63m x 3.00m	11'11" x 9'10"
Total Area	79.0 sq m	851 sq ft

MT 1702

Kitchen/Living/Dining	8.99m x 3.93m	29'6" x 12'11"
Bedroom 1	4.11m x 3.20m	13'6" x 10'6"
Bedroom 2	3.32m x 2.85m	10'11" x 9'4"
Bedroom 3	3.19m x 2.35m	10'6" x 7'9"
Total Area	88.3 sq m	951 sq ft

MT 1703

Kitchen/Living/Dining	7.69m x 4.20m	25'3" x 13'9"
Bedroom	3.86m x 3.38m	12'8" x 11'1"
Total Area	52.3 sq m	563 sq ft

MT 1704

Kitchen/Living/Dining	6.32m x 5.19m	20'9" x 17'0"
Bedroom	4.68m x 3.20m	15'4" x 10'6"
Total Area	52.2 sq m	562 sq ft

MT 1705

Kitchen/Living/Dining	7.11m x 5.39m	23'4" x 17'8"
Bedroom 1	3.42m x 3.13m	11'3" x 10'3"
Bedroom 2	3.75m x 2.90m	12'4" x 9'6"
Total Area	71.9 sq m	773 sq ft

The dimensions given are accurate to within plus or minus two inches (50mm) from floor level and include wardrobe spaces where applicable. ◀▶ Indicates where measurements have been taken from. They are not intended to be used for carpet sizes, appliance space or terms of furniture. Views shown are indicative and are for orientation purposes. The information is for general guidance only. S = Services



LEVEL 18

MANHATTAN TOWER

View towards North London

View towards Landscaped Piazza

View towards The City



View towards Canary Wharf

MANHATTAN TOWER

- 1 bedroom apartment
- 2 bedroom apartment
- 3 bedroom apartment

MT 1801

Kitchen/Living/Dining	6.52m x 5.63m	21'5" x 18'6"
Bedroom 1	4.41m x 3.13m	14'6" x 10'3"
Bedroom 2	3.63m x 3.00m	11'11" x 9'10"
Total Area	78.2 sq m	842 sq ft

MT 1802

Kitchen/Living/Dining	8.99m x 3.93m	29'6" x 12'11"
Bedroom 1	4.11m x 3.20m	13'6" x 10'6"
Bedroom 2	3.32m x 2.85m	10'11" x 9'4"
Bedroom 3	3.19m x 2.35m	10'6" x 7'9"
Total Area	88.3 sq m	951 sq ft

MT 1803

Kitchen/Living/Dining	7.69m x 4.20m	25'3" x 13'9"
Bedroom	3.86m x 3.38m	12'8" x 11'1"
Total Area	52.3 sq m	563 sq ft

MT 1804

Kitchen/Living/Dining	6.32m x 5.19m	20'9" x 17'0"
Bedroom	4.68m x 3.20m	15'4" x 10'6"
Total Area	52.2 sq m	562 sq ft

MT 1805

Kitchen/Living/Dining	7.13m x 5.40m	23'5" x 17'9"
Bedroom 1	3.42m x 3.13m	11'3" x 10'3"
Bedroom 2	3.75m x 2.90m	12'4" x 9'6"
Total Area	72.8 sq m	783 sq ft

The dimensions given are accurate to within plus or minus two inches (50mm) from floor level and include wardrobe spaces where applicable. ◀▶ Indicates where measurements have been taken from. They are not intended to be used for carpet sizes, appliance space or terms of furniture. Views shown are indicative and are for orientation purposes. The information is for general guidance only. S = Services



LEVEL 19

MANHATTAN TOWER

View towards North London

View towards Landscaped Piazza

View towards The City



View towards Canary Wharf

MANHATTAN TOWER

- 1 bedroom apartment
- 2 bedroom apartment
- 3 bedroom apartment

MT 1901

Kitchen/Living/Dining	6.89m x 5.63m	22'7" x 18'6"
Bedroom 1	4.41m x 3.13m	14'6" x 10'3"
Bedroom 2	3.63m x 3.00m	11'11" x 9'10"
Total Area	79.0 sq m	851 sq ft

MT 1902

Kitchen/Living/Dining	8.99m x 3.93m	29'6" x 12'11"
Bedroom 1	4.11m x 3.20m	13'6" x 10'6"
Bedroom 2	3.32m x 2.85m	10'11" x 9'4"
Bedroom 3	3.19m x 2.35m	10'6" x 7'9"
Total Area	88.3 sq m	951 sq ft

MT 1903

Kitchen/Living/Dining	7.69m x 4.20m	25'3" x 13'9"
Bedroom	3.86m x 3.38m	12'8" x 11'1"
Total Area	52.3 sq m	563 sq ft

MT 1904

Kitchen/Living/Dining	6.32m x 5.19m	20'9" x 17'0"
Bedroom	4.68m x 3.20m	15'4" x 10'6"
Total Area	52.2 sq m	562 sq ft

MT 1905

Kitchen/Living/Dining	7.11m x 5.39m	23'4" x 17'8"
Bedroom 1	3.42m x 3.13m	11'3" x 10'3"
Bedroom 2	3.75m x 2.90m	12'4" x 9'6"
Total Area	71.9 sq m	773 sq ft

The dimensions given are accurate to within plus or minus two inches (50mm) from floor level and include wardrobe spaces where applicable. ◀▶ Indicates where measurements have been taken from. They are not intended to be used for carpet sizes, appliance space or terms of furniture. Views shown are indicative and are for orientation purposes. The information is for general guidance only. S = Services



SUB-PENTHOUSES

LEVEL 20

MANHATTAN TOWER

View towards North London

View towards Landscaped Piazza

View towards The City



View towards Canary Wharf

View towards The River Thames

MANHATTAN TOWER

2 bedroom sub-penthouse

MT 2001

Kitchen/Living/Dining	7.61m x 6.88m	24'12" x 22'7"
Bedroom 1	4.36m x 3.13m	14'4" x 10'3"
Bedroom 2	3.51m x 3.23m	11'6" x 10'7"
Total Area	84.8 sq m	913 sq ft

MT 2003

Kitchen/Living/Dining	6.70m x 6.31m	21'12" x 20'8"
Bedroom 1	5.27m x 2.95m	17'3" x 9'8"
Bedroom 2	3.30m x 3.21m	10'10" x 10'6"
Total Area	82.0 sq m	882 sq ft

MT 2002

Kitchen/Living/Dining	10.38m x 5.86m	34'1" x 19'3"
Bedroom 1	5.63m x 3.91m	18'6" x 12'10"
Bedroom 2	4.16m x 3.03m	13'8" x 9'11"
Total Area	105.3 sq m	1,133 sq ft

MT 2004

Kitchen/Living/Dining	8.94m x 4.67m	29'4" x 15'4"
Bedroom 1	5.69m x 3.77m	18'8" x 12'4"
Bedroom 2	3.92m x 2.75m	12'10" x 9'0"
Total Area	88.4 sq m	951 sq ft

The dimensions given are accurate to within plus or minus two inches (50mm) from floor level and include wardrobe spaces where applicable. ◀▶ Indicates where measurements have been taken from. They are not intended to be used for carpet sizes, appliance space or items of furniture. Views shown are indicative and are for orientation purposes. The information is for general guidance only. S = Services



PENTHOUSES

LEVEL 21

MANHATTAN TOWER

View towards North London

View towards Landscaped Piazza

View towards The City



View towards Canary Wharf

View towards The River Thames

MANHATTAN TOWER

2 bedroom penthouse

MT 2101

Kitchen/Living/Dining	7.61m x 6.88m	24'12" x 22'7"
Bedroom 1	4.36m x 3.13m	14'4" x 10'3"
Bedroom 2	3.51m x 3.23m	11'6" x 10'7"
Total Area	84.8 sq m	913 sq ft

MT 2103

Kitchen/Living/Dining	6.70m x 6.31m	21'12" x 20'8"
Bedroom 1	5.27m x 2.95m	17'3" x 9'8"
Bedroom 2	3.30m x 3.21m	10'10" x 10'6"
Total Area	82.0 sq m	882 sq ft

MT 2102

Kitchen/Living/Dining	10.38m x 5.86m	34'1" x 19'3"
Bedroom 1	5.63m x 3.91m	18'6" x 12'10"
Bedroom 2	4.16m x 3.03m	13'8" x 9'11"
Total Area	105.3 sq m	1,133 sq ft

MT 2104

Kitchen/Living/Dining	8.94m x 4.67m	29'4" x 15'4"
Bedroom 1	5.69m x 3.77m	18'8" x 12'4"
Bedroom 2	3.92m x 2.75m	12'10" x 9'0"
Total Area	88.4 sq m	951 sq ft

The dimensions given are accurate to within plus or minus two inches (50mm) from floor level and include wardrobe spaces where applicable. ◀▶ Indicates where measurements have been taken from. They are not intended to be used for carpet sizes, appliance space or items of furniture. Views shown are indicative and are for orientation purposes. The information is for general guidance only. S = Services



**RELAX, UNWIND AND
DISCOVER THE HIGHLIFE**



Computer generated image of living room and kitchen style at Manhattan Plaza (furnishings not included).



THE FINER DETAIL

KITCHEN

- High specification handleless fitted units from London designer Urban Myth
- Stone worktops
- Fully integrated Smeg appliances: stainless steel oven, ceramic hob, dishwasher, fridge/freezer & washer/dryer with stainless steel extractor hood
- Glass splashback
- Feature lighting under wall units

BATH & ENSUITE SHOWER ROOMS

- Bath with overhead rain shower, thermostatic mixer & glazed screen
- Large shower enclosure to ensembles
- Contemporary ceramic tiling
- Large vanity mirror
- Bespoke cabinetry with built in storage & low voltage socket
- Two towel rails

FIXTURES & FITTINGS

- Wardrobe to main bedroom with sliding & mirrored doors
- Satin chrome door handles
- Recessed downlights to kitchen & bathrooms
- Sky+, TV & telephone outlets to living room, with TV outlets to all bedrooms

FLOORING

- Kitchen, living room & hallway in premium quality timber laminate
- Bedrooms carpeted in a warm, neutral colour tone

DÉCOR

- Smooth finish to all walls & ceilings, painted in white emulsion
- White satinwood finish to doors & woodwork

GENERAL FEATURES

- Concierge service
- Private residents' gymnasium
- Two landscaped private residents' roof-top gardens
- Underfloor heating
- Outside space to all apartments
- Basement car parking*
- Communal bicycle storage

SECURITY & WARRANTIES

- Video entryphone system to all apartments
- Looped CCTV system to communal areas
- 10 year NHBC warranty
- Two year, Telford Homes 24/7 emergency cover
- Comprehensive induction with designated Telford Homes Customer Service Manager

TOWNHOUSE SPECIFICATION UPGRADES

- Designated enclosed front gardens
- High-gloss finish to kitchen
- Feature coffered edge detail to kitchen ceiling

PENTHOUSE PREMIUM SPECIFICATION UPGRADES

(To 20th & 21st levels)

KITCHENS

- High-gloss finish to kitchen
- Full height glass splashback
- Siemens induction touch control hob, oven & microwave

BATH & ENSUITE SHOWER ROOMS

- Villeroy & Boch sanitaryware

FLOORING

- Kitchen, living room & hallway in engineered timber
- Bedrooms carpeted in a warm, neutral colour tone with velvet pile

GENERAL

- Comfort cooling to apartments

FIXTURES & FITTINGS

- Upgraded wardrobes
- Downlights to living room
- Full height entrance & apartment doors

Specification details are correct at time of going to print but are for guidance only and remain subject to change. Exact fittings and finishes are subject to availability at time of installation. Computer generated images of development and photograph of typical bathroom. *Available at additional cost.



**AN UNRIVALLED
QUALITY
&
SERVICE**

97%
of customers
surveyed
would
recommend us*

**THE TELFORD HOMES BRAND DELIVERS HIGH QUALITY
HIGHLY DESIRABLE NEW HOMES THAT ARE
SUPPORTED BY FIRST CLASS CUSTOMER SERVICE.**

Tel: +44 (0)1992 809800

www.telfordhomes.london

Telford Homes Plc
Telford House, Queensgate, Britannia Road, Waltham Cross, Herts EN8 7TF.



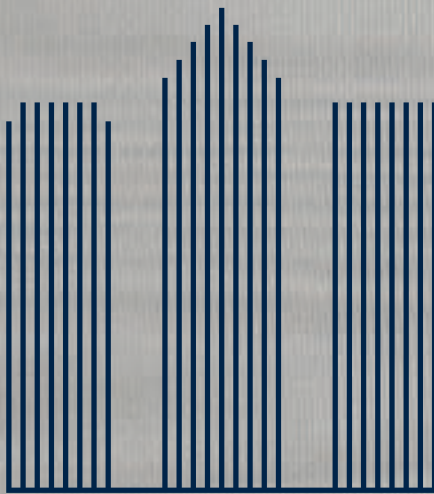
These particulars are for illustration only. We operate a policy of continuous improvement and individual features such as kitchen and bathroom layouts, doors, windows and elevational treatments may vary from time to time. Specification details are for guide purposes only and remain subject to change without prior notice. Should a replacement be required this will be to an equal or higher standard. Consequently these particulars should be treated as general guidance only and cannot be relied upon as accurately describing any of the Specified Matters prescribed by any order made under the Property Misdescriptions Act 1991. Nor do they constitute a contract, part of a contract or a warranty. Manhattan Plaza is a marketing name and may not form part of the final postal address. Computer generated images are indicative only and may be subject to change. Details correct at time of going to print E and OE.

Our dedicated customer service team is hands-on and quality-control focused as well as professional and approachable. At completion they demonstrate working features with owners or offer a tenants' induction service, and for the first two years provide a 24/7 free Emergency Service, 365 days a year. Landlords benefit from our trusted links with reputable letting and management agencies and furnishing specialists.

*Independent satisfaction survey results for 12 months from January to December 2014.



A NEW ICON FOR LONDON



A development by Telford Homes Plc

www.telfordhomes.london